



Service Advisory

CC-531

SERIES 2000/2500

Models Affected: GT 2542 (14A-2D2G710)
GT 2544 (14A-2C7L710)
GT 2550 (14A-2E7P710)
GT 2554 (14A-2A7K710)

Serial Number Range Affected: Above Tractor Models Built January 13, 2006 & After. (**1A136G & After**).

Date: **August 16, 2006**

Subject: **HEAT SHIELD EXTENSION**

PURPOSE: An additional exhaust heat shield has been developed to help redirect heated exhaust air away from the lower portion of the hood and latch assembly area.

SOLUTION: Order & install (Qty. 1) **703-05947** Muffler Extension Shield, (Qty. 3) **728-0177** 3/16" x .450" Pop Rivets & (Qty. 3) **736-0400** .194" x .62" x .063" Flat Washer.

INSTALLATION:

1. Place tractor on a flat surface. Open hood and let tractor cool down before proceeding with installation.
NOTE: (Exhaust surfaces can reach high temperatures that can cause severe burns/injury).

2. Measure from the bottom of the right side of the existing muffler shield 24/32" (.765") & approximately 1-3/8" (1.375") in from the edge. Repeat for the left side. Place a reference mark as shown in Figure 1.

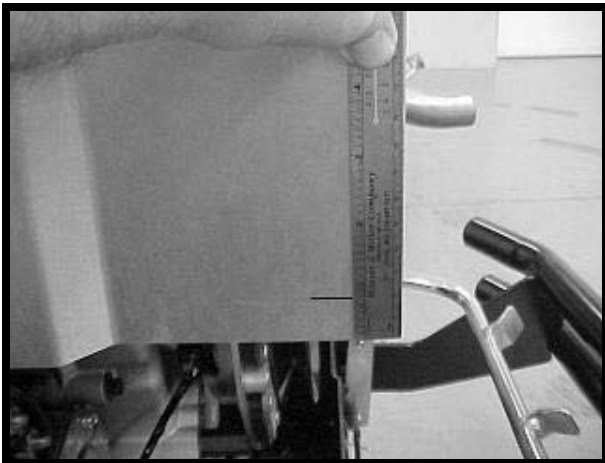


FIGURE 1

3. Hold the new extended muffler shield onto the existing muffler shield. Line the reference marks up in the center of the holes. Using a pencil draw a circle using the hole as a guide on all three holes. (Figure 2).
NOTE: Be sure to keep all holes lined up with the reference marks.

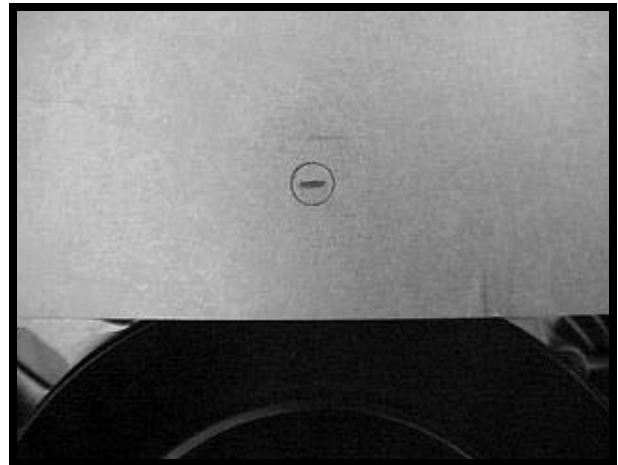


FIGURE 2

4. Lightly center punch the center of the pencilled reference holes and drill a pilot hole using a 3/32" twist drill bit. Use a 13/64" twist drill bit for the final hole size. Clean all burs from the drilled holes. Surface must be flat for washer to seat properly.

5. Place the extended muffler shield on the existing muffler shield & verify all three holes line up.

6. Insert a 728-0177 pop rivet in the front center hole of the heat shield extension & muffler heat shield.

7. Place a 736-0400 flat washer on the back side of the rivet on the inside of the muffler heat shield. Keep the flat washer flush against the inside of the muffler heat shield **NOTE:** (Keep the heat shield extension straight and aligned with the left & right side holes). Secure the rivet with a pop rivet gun.

8. Align the right side holes of the heat shield extension & muffler heat shield. Insert a 728-0177 pop rivet in the hole.

9. Place a 736-0400 flat washer on the back side of the rivet on the inside of the muffler heat shield. Keep the flat washer flush against the inside of the muffler heat shield. **NOTE:** (Make sure heat shield extension is straight & that the left side holes are still aligned). Secure pop rivet with a pop rivet gun.

10. Repeat process for the left side.

11. Figure 3 shows a unit before extened muffler shield has been added and Figure 4 shows the same unit after the extened muffler shield has been added.



FIGURE 3

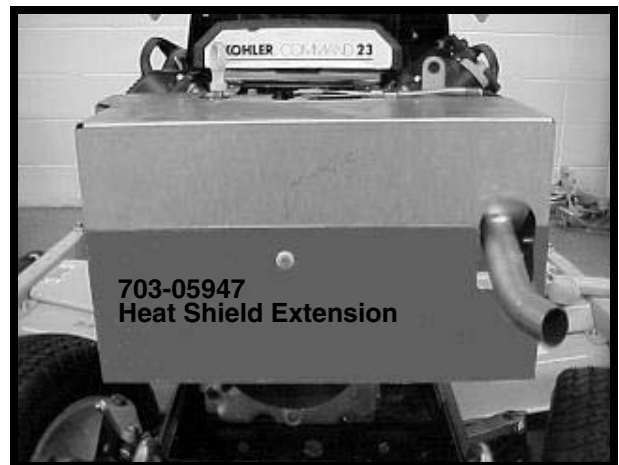


FIGURE 4

Warranty: Normal warranty terms apply. Indicate Service Advisory **CC-531** and **703-05875A** as the original failed part on the claim. Repair time allowance is 0.5 Hrs.

SERVICE MANAGER	PARTS MANAGER	SALES MANAGER	SERVICE TECH.	SERVICE TECH.

Circulate and Initial