



# Service Kit 759-04137A

Date: August 23, 2006  
**October 31, 2008 Revised**

Subject: 2500 Series Hood Kit.

Models Affected: GT 2542 (14A-2D2G710)  
GT 2544 (14A-2C7L710)  
GT 2550 (14A-2E7P710)  
GT 2554 (14A-2A7K710)

Serial No. Range: January 13, 2006 & After  
(1A136G & After).

**PURPOSE:** A service replacement hood and a shield to help redirect heated exhaust air away from the lower portion of the hood & latch assembly area.

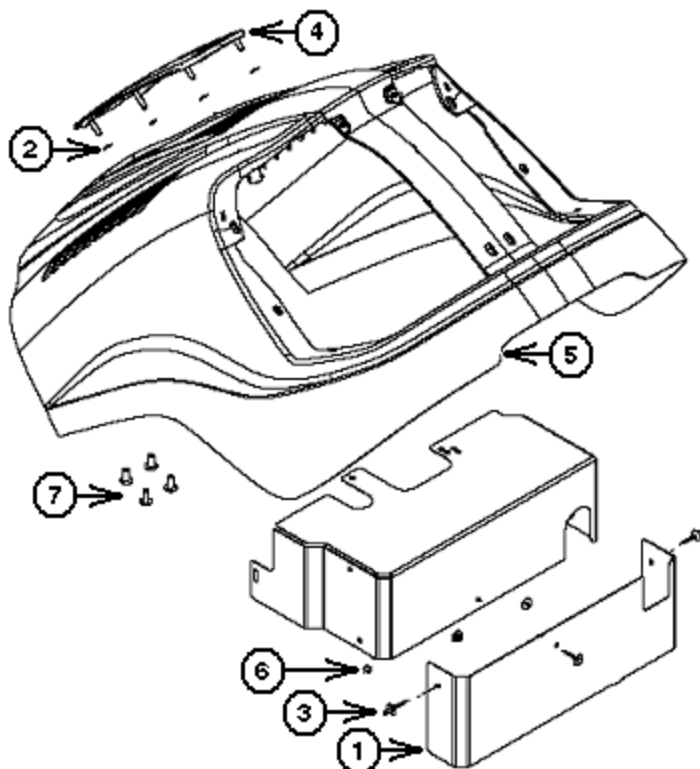
**NOTE:** These materials are prepared for use by trained technicians who are experienced in the service and repair of equipment of the kind described in this publication, and are not intended for use by untrained or inexperienced individuals. Such individuals should seek the assistance of an authorized service technician or dealer.

**NOTE:** Save this Instruction Sheet. Refer to it when ordering replacement parts.

## Service Kit Contents 759-04137A

ITEM NO.	PART NUMBER	QTY	DESCRIPTION
1	703-05947	1	Muffler Extension Shield
2	726-0233	4	Push Nut
3	728-0177	3	Pop Rivet 3/16 x .450"
4	731-05161	1	Hood Cover
5	731-06887	1	Hood
6	736-0400	3	Flat Washer .194" x .62" x .063"
7	710-1242	4	5/16-14 x .75 HiLow Screw

Instruction Sheet included with kit.



**FIGURE 1**

**NOTE:** The Hood Kit 759-04137A Does Not Include Labels. All Labels Need To Be Ordered Per Tractor Model. Below Is A List Of Labels Required. All Models Require The L.H & R.H. Hood Stripe (Cub Cadet) Labels. Order Model Designation Labels As Required.

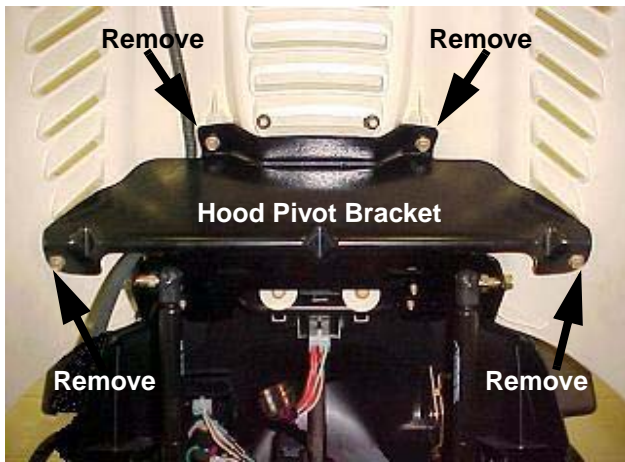
## List Of Labels

MODEL NO.	PART NUMBER	QTY	DESCRIPTION
ALL	777D09722	1	L.H. Hood Stripe (Cub Cadet)
ALL	777D09721	1	R.H. Hood Stripe (Cub Cadet)
GT 2542	777D09713	A/R	L.H. GT 2542 Label
GT 2542	777D09714	A/R	R.H. GT 2542 Label
GT 2544	777D09716	A/R	L.H. GT 2544 Label
GT 2544	777D09715	A/R	R.H. GT 2544 Label
GT 2550	777D09717	A/R	L.H. GT 2550 Label
GT 2550	777D09718	A/R	R.H. GT 2550 Label
GT 2554	777D09720	A/R	L.H. GT 2554 Label
GT 2554	777D09719	A/R	R.H. GT 2554 Label

### Instructions: (Removal Of Hood).

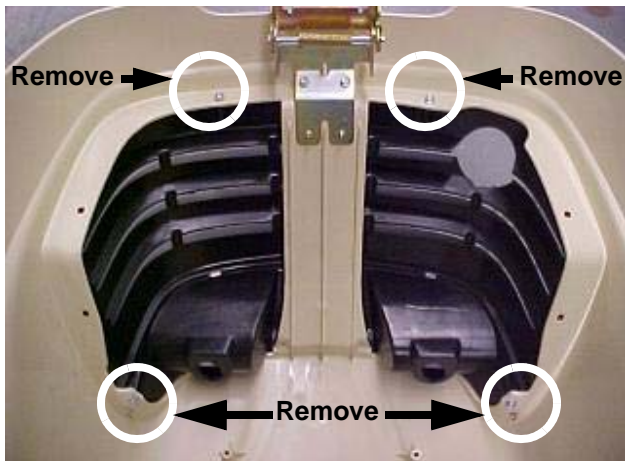
1. Park tractor on a flat level surface.
2. Disconnect the negative battery cable from the battery terminal. Disconnect the positive battery cable from the battery terminal.
3. Disconnect wire harness leads from the headlights.
4. Remove the hex washer screw, two flat washers (one on each side of the cable clamp). Removal of the clamp from around the headlight wire harness is not necessary. Retain these parts for reassembly later.
5. Remove the headlight lamps and set off to the side so no damage occurs to them.

6. Remove the four (4) screws that secure the hood to the hood pivot bracket & remove hood. Figure 2.  
**NOTE:** Have some one support the hood during removal.



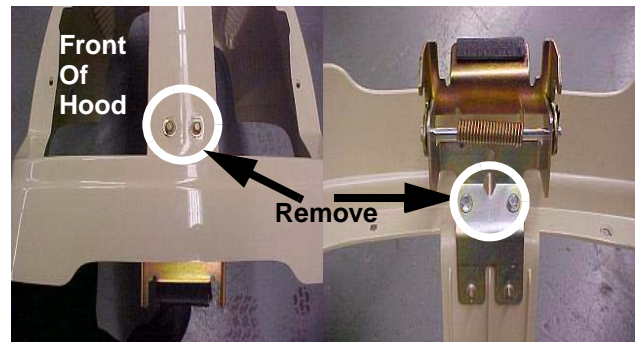
**FIGURE 2**

7. Set the hood upside down & remove the (4) four screws that secure the grill assembly to the hood. See Figure 3. **NOTE:** Be careful not to damage the grill assembly. It will be used for reassembly in the new hood.



**FIGURE 3**

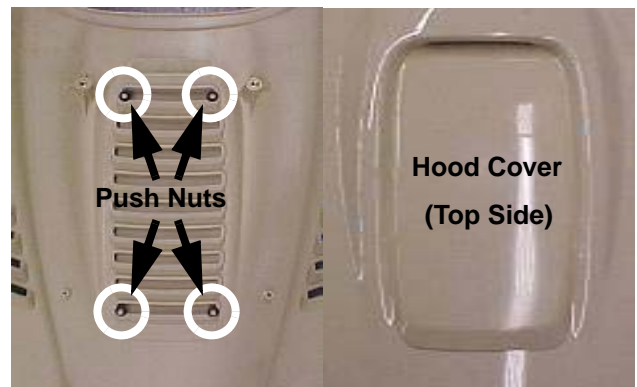
8. Remove the (4) four screws that secure the hood latch assembly to the hood. (2) two screws are located in the front & (2) screws are located on the inside of the hood to secure the latch assembly. See Figure 4.  
**NOTE:** The latch assembly will be used for reassembly.



**FIGURE 4**

**Instructions: (Assembly of Hood).**  
**(Refer to the Parts List & Figure 1 On Page 1.)**

1. Install the hood cover (Ref.# 4) to the hood (Ref. # 5) & securing with the four push nuts (Ref. # 2) shown in Figure 5.



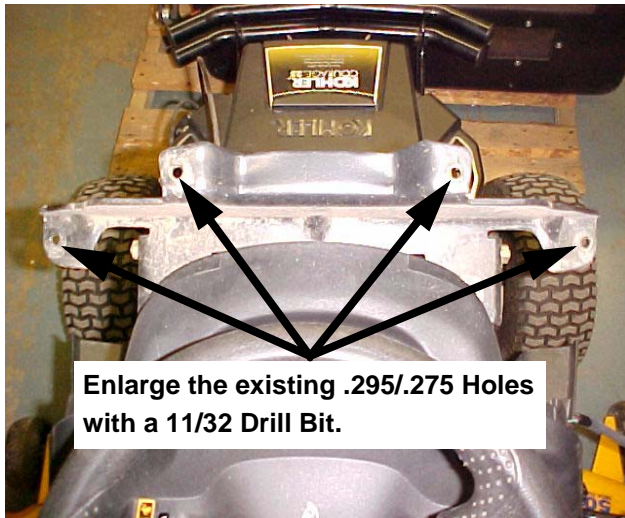
**FIGURE 5**

2. Install the latch assembly onto the new hood using the (4) four original screws removed in step 8 of the Removal Instruction section. Refer to Figure 4 for location reference. The (2) two yellow dicromate color screws mount through the front of the hood under the grill area & thread into the latch assembly plate. Torque to 35 - 50 in. lbs. Install the (2) two remaining screws securing the hood latch plate to the hood from the inside. Tighten but DO NOT over tighten.

3. Install the grille assembly to the new hood. Secure with the (4) four original screws removed in step 7 of the Removal instruction section. Refer to Figure 3 for location reference. Tighten but DO NOT over tighten.

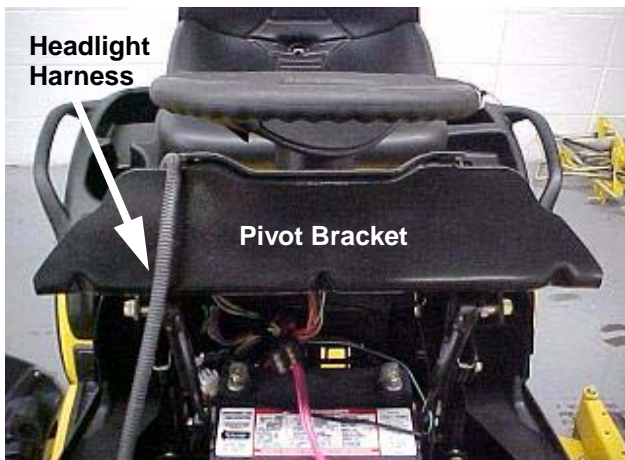
4. At this time the mounting holes in the Pivot Bracket need to be enlarged to accept the new 5/16-14 x .75 HiLow Screws **710-1242**. Use an 11/32 drill bit to enlarge the mounting holes shown in Figure 6.

5. Remove any burrs left from the drilling process.



**FIGURE 6**

6. Make sure headlight wire harness is properly routed over the top of the Pivot Bracket (See Figure 7) before installing & securing the hood. **NOTE:** Make sure headlight harness is not pinched between hood & hood pivot bracket.



**FIGURE 7**

7. Mount the new Hood Ref.# 5 731-06887 from the Service Kit to the Pivot Bracket and secure with the (4) four 710-1242 5/16-14 x .75 Hi Low Screws provided in the Service Kit Ref. # 7. See Figure 8. Torque the (4) four Hi Low Screws to 50-65 in. lbs. **NOTE: DO NOT** over tighten.

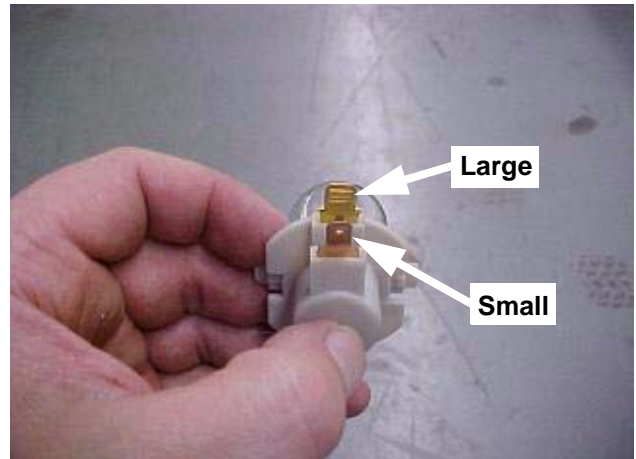


**FIGURE 8**

8. Install the cable clamp around the headlight harness if removed in step 4 of the removal instruction section. Secure the cable clamp to the hood using the original screw & two flat washers (one on each side of the cable clamp).

9. Install the headlight lamps into their sockets in the grille assembly.

10. Connect the wire terminal leads to the lamp bulbs. **NOTE:** The male lamp terminals consist of two different sizes as shown in Figure 9. Make sure to connect the appropriate female terminal of the wire harness to the correct size male terminal of the lamp bulb. (Red wire terminal is smaller than the green wire terminal).



**FIGURE 9**

8. Figure 10 shows the proper routing of the headlight harness.



**FIGURE 10**

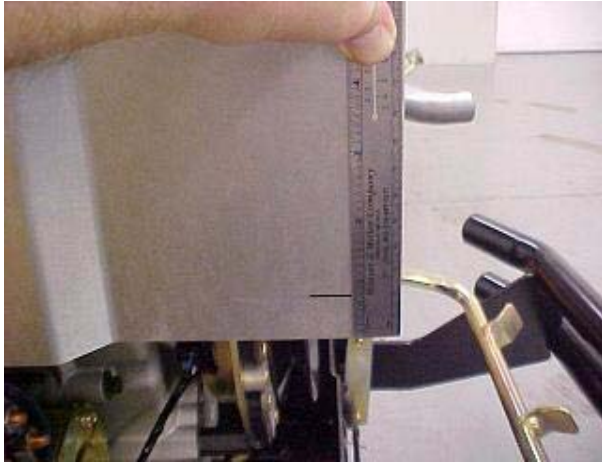
9. Carefully close the hood paying attention that the hood does not bind or pinch at the dash area. Make sure the hood latches correctly and that the exhaust pipe is centered in the opening in the grille assembly. If not, adjust accordingly.

**Instructions: (Installation Of Heat Shield Extension).**

1. If tractor was ran after hood installation let tractor cool down before proceeding with installation of the Heat Shield Extension. **NOTE:** (Exhaust surfaces can reach high tempress that can cause severe burns/injury).

**(For Units Built After January 13, 2006)**

2. Measure from the bottom of the right side of the existing muffler shield  $24/32"$  (.765") & approximately  $1-3/8"$  (1.375") in from the edge. Repeat for the left side. Place a reference mark as shown in Figure 11.



**FIGURE 11**

3. Hold the new extended muffler shield onto the existing muffler shield. Line the reference marks up in the center of the holes. Using a pencil draw a circle using the hole as a guide on all three holes. (Figure 12). **NOTE:** be sure to keep all holes lined up with the reference marks.



**FIGURE 12**

4. Lightly center punch the center of the penciled reference holes and drill a pilot hole using a  $3/32"$  twist drill bit. Use a  $13/64"$  twist drill bit for the final hole size. Clean all burrs from the drilled holes. Surface must be flat for washer to seat properly.

5. Place the extended muffler shield on the existing muffler shield & verify all three holes line up.

6. Insert a 728-0177 pop rivet in the front center hole of the heat shield extension & muffler heat shield.

7. Place a 736-0400 flat washer on the back side of the rivet on the inside of the muffler heat shield. Keep the flat washer flush against the inside of the muffler heat shield **NOTE:** (Keep the heat shield extension straight and aligned with the left & right side holes). Secure the rivet with a pop rivet gun.

8. Align the right side holes of the heat shield extension & muffler heat shield. Insert a 728-0177 pop rivet in the hole.

9. Place a 736-0400 flat washer on the back side of the rivet on the inside of the muffler heat shield. Keep the flat washer flush against the inside of the muffler heat shield. **NOTE:** (Make sure heat shield extension is straight & that the left side holes are still aligned). Secure pop rivet with a pop rivet gun.

10. Repeat process for the left side.

11. Figure 13 shows a unit before extended muffler shield has been added and Figure 14 shows the same unit after the extended muffler shield has been added.



**FIGURE 13**



**FIGURE 14**

**Instructions: (Decal Installation & Final Reassembly).**

1. Make sure outside of the hood surface is clean & void of any dirt or oil. Clean with warm water & dish soap solution. Dry off with a non lint transferring towel. Install the hood decals that were ordered separately. Use the old hood as a template for proper location of decals.
2. Reconnect the positive battery cable to the positive battery terminal. Reconnect the negative battery cable to the negative battery terminal.
3. Start & run unit . Check that all safety features function properly. Recheck hood alignment & that hood latches securely to the hood latch rod.