

## Power Equipment

CODE: CC-289 (REVISED 9/30/94. DESTROY ALL PREVIOUS COPIES)

DATE: SEPTEMBER 23, 1994

SUBJECT: POWER TAKE OFF (PTO) CLUTCH FAILURES 2185 CUB CADET.

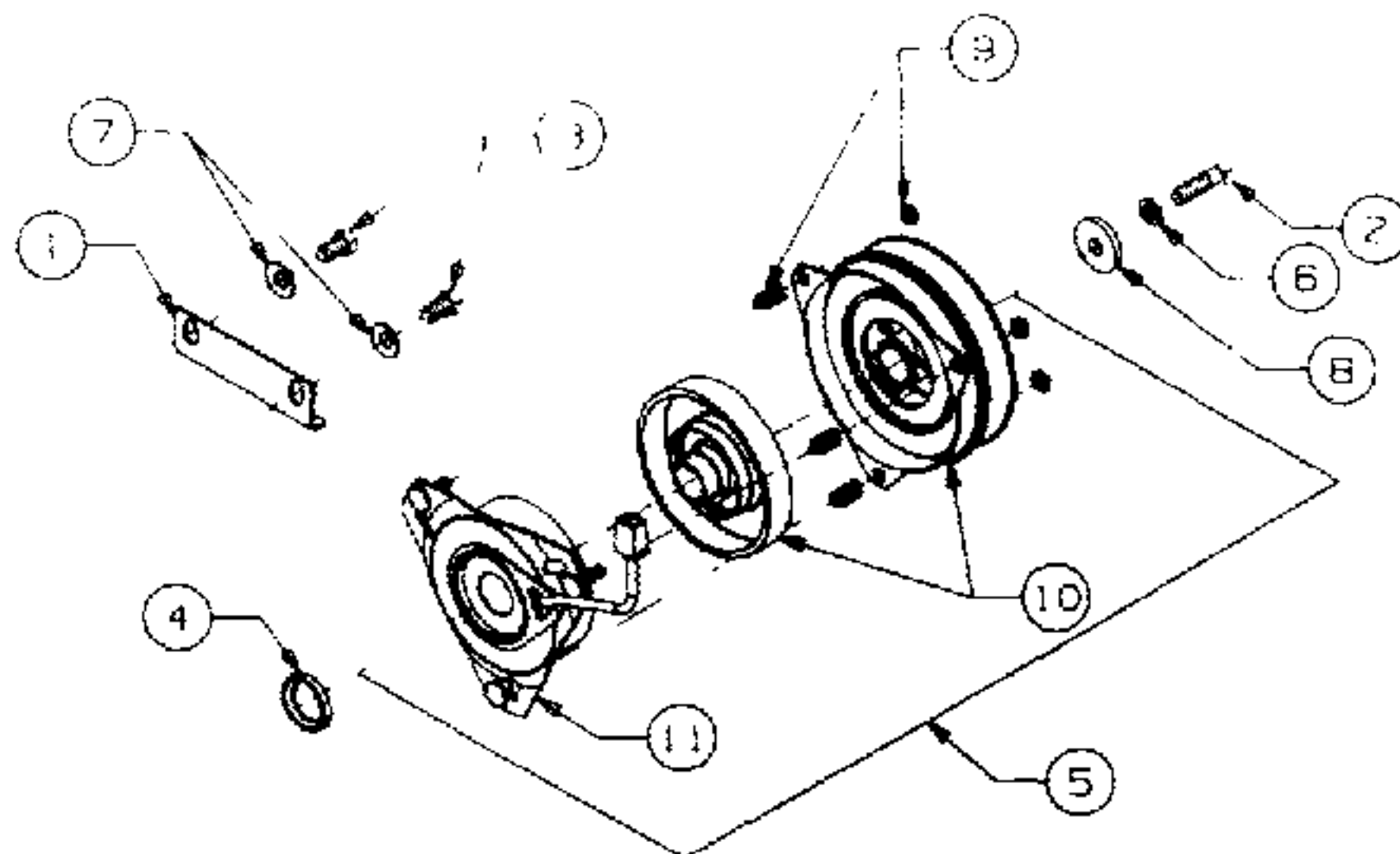
Reports from the field indicate difficulties with the above mentioned tractors PTO clutch including, clutch bearing failures, field winding failures or exposed field windings.

Failures seem to be caused by improper clamping of the PTO clutch to the engine crankshaft. If it does not fit tight against the spacer the above examples may occur. Should you experience the above symptoms or failures, the following should be done.

Order a second spacer, part no. 711-3396, (See fig. 4) and install it on the crankshaft with the existing spacer. Install the PTO clutch, making sure that the clutch fits against the spacers. Once it has been verified that clutch to spacer contact has been achieved, with no other interference, install the retaining bolt, lock washer and retaining washer into the crankshaft. Torque to 50-60 ft. lb..

Submit a warranty claim for 1.5 hours labor plus any parts used.

NOTE: P&D will honored for any warranty failure occurring within the first year of warranty.



Circulate and initial

Service Mgr.	Parts Mgr.	Service Tech.	Service Tech.	
--------------	------------	---------------	---------------	--