

WINCH OWNER'S MANUAL

⚠ WARNING: READ INSTRUCTIONS CAREFULLY BEFORE ATTEMPTING TO INSTALL, OPERATE OR SERVICE THIS WINCH. FAILURE TO COMPLY WITH INSTRUCTIONS COULD RESULT IN SERIOUS OR FATAL INJURY. RETAIN THESE INSTRUCTIONS FOR FUTURE REFERENCE.

⚠ IMPORTANT SAFETY INFORMATION

- ⚠ Ratchet type winches are built for multi-purpose hauling and pulling operations and are not recommended for lifting applications. For lifting, use a self-locking winch (model DLB1500A, DLB2500A, B1200B or B1500). *DL* winches are not to be used as hoists for lifting, supporting, or transporting people or for loads over areas where people could be present.
- ⚠ Respect this winch. High forces are created when using a winch, creating potential safety hazards. It should be operated and maintained in accordance with instructions. Never allow children or anyone who is not familiar with the operation of the winch to use it.
- ⚠ Maintain a firm grip on the winch handle at all times, and never release handle when ratchet lever is in unlocked position with a load on the winch. Otherwise, handle will spin violently, which could cause serious injury (DL600A thru DL3500).
- ⚠ Check for proper ratchet operation on each use of the winch. Do not use if damaged. Seek immediate repairs.
- ⚠ Never use the winch handle as a convenient handle for pulling or maneuvering the entire trailer or other equipment. Never pull on the winch handle against a locked ratchet.
- ⚠ Never exceed rated capacity. Excess load may cause premature failure and could result in serious personal injury. The winch is rated with three layers of line on the hub. Using more layers of line or a large hub increases the load on the winch.
- ⚠ Never apply load on winch with cable or rope fully extended. Keep at least three full turns of cable or rope on the reel.
- ⚠ Secure load properly. When winching operation is complete, use tie downs or chains to support the load.
- ⚠ Operate with hand power only. This winch should not be operated with a motor of any kind. If the winch cannot be cranked easily with one hand, it is probably over-loaded.

LIMITED FIVE (5) YEAR WARRANTY

Dutton-Lainson Company provides the following five (5) year limited warranty to the **original consumer purchaser** of D-L® ratchet winches, brake winches, and worm gear winches:

Dutton-Lainson Company will, at its option, repair or replace free-of-charge any part or parts found to be defective in material or workmanship under normal use for the period of five (5) years from the original purchase date or, if that date cannot be established, the date of manufacture. This includes a warranty against operational failure for the same five year period due to rust or corrosion of the TUFFPLATE® finish. This warranty is void if the product is not installed and used in accordance with the operating instructions, has been subject to alteration or damage, or is defective due to service or repair. This warranty does not assure that the product shall remain useable for the five (5) year warranty period since the life of the product is dependent upon the manner and the frequency of use.

Repair or replacement is the purchaser's sole remedy under this or any other warranty on the product, whether express or implied. **Dutton-Lainson Company shall not be liable for any incidental or consequential damages of any kind. Dutton-Lainson Company expressly disclaims any implied warranty of merchantability or fitness for particular purpose after the five (5) year warranty period.** Some states do not allow the exclusion or limitation of incidental or consequential damages and some states do not allow limitation on how long an implied warranty lasts, so the above exclusions and limitations may not apply to you.

To make a claim, contact Dutton-Lainson Company, Hastings, Nebraska 68902-0729, U.S.A., identify the product, and follow the instructions for return, which will be provided. Repair or replacement of the product, if found to be defective, will normally be completed within sixty (60) days after the receipt. The purchaser will be responsible for shipping costs to the Company.

This warranty gives you specific legal rights, and you may have other rights which vary from state-to-state.

This warranty is governed by the laws of the State of Nebraska except as modified by the laws of the U.S.A. and is void in countries where prohibited.

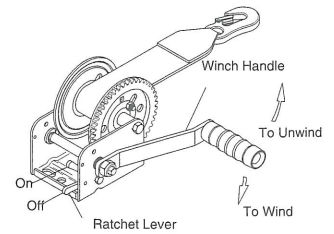
Date Purchased: _____

Winch Date Code: _____
(located inside front edge of base)

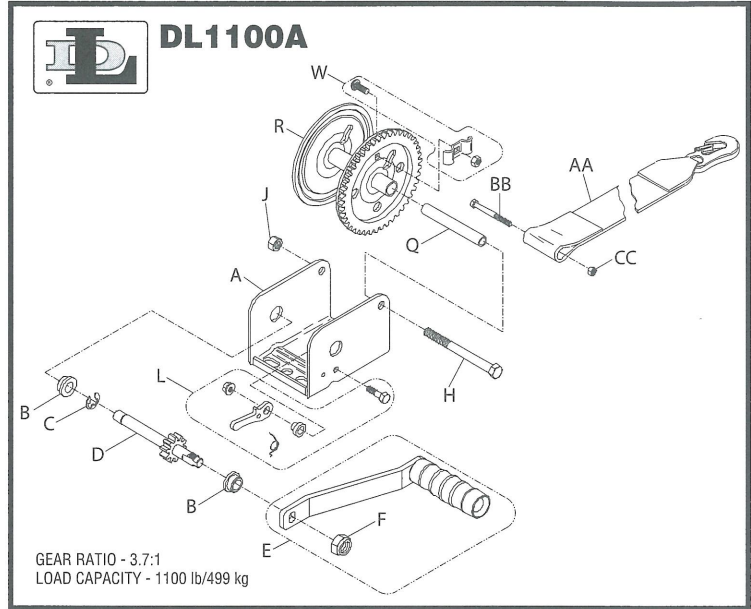
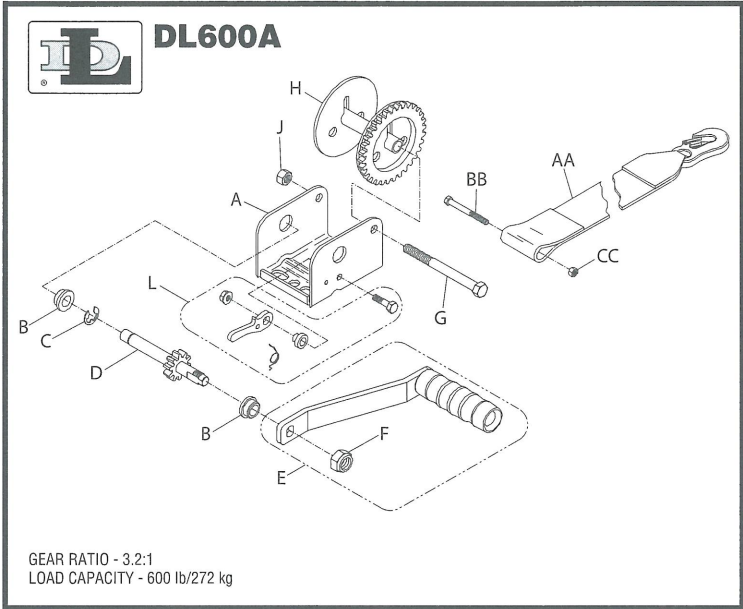
Winch Model Number: _____

OPERATING INSTRUCTIONS (Models DL600A & DL1100A)

HANDLE AND NUT MUST BE TIGHTENED AGAINST DRIVE SHAFT BEFORE OPERATING WINCH. Wind line on winch reel by turning winch handle in clockwise direction with ratchet lever in "on" position. The ratchet should produce a loud, sharp, clicking noise. Make sure that ratchet lever is in "on" position and holding load before winch handle is released. To unwind or reel out line, securely grip winch handle and apply force in clockwise direction so that ratchet lever can easily be moved to "off" position. Carefully turn handle in counter-clockwise direction. Do not lose control.



 **NOT FOR MOVEMENT OF HUMAN BEINGS**

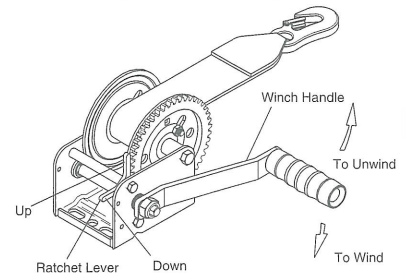


Ref. Description	Part No.	Ref. Description	Part No.
A Winch Base	404882-PL	H Winch Reel	
B Shaft Bushing (2)	204006	(5/8" Hub, 2" Wide) Opt.	304791
C E-Ring	205012	J Locknut	204803
D Drive Shaft	304720	L Ratchet Kit	5704531
D Drive Shaft, Spl.	304762	AA Strap - 16'	303271
E Winch Handle, 7" w/Nut	5703046	AA Strap - 12'	304543
F Handle Nut	205015	BB Strap Bolt 1/4" x 2-3/4"	205281
G Reel Shaft	204805	CC Locknut 1/4"	205283
H Winch Reel			
(5/8" Hub, 2-3/16" Wide)	304721-PL		

Ref. Description	Part No.	Ref. Description	Part No.
A Winch Base	404876-PL	R Winch Reel	304792
B Shaft Bushing (2)	204006	(7/8" Hub, 2" Wide)	
C E-Ring	205012	R Winch Reel	304717-PL
D Drive Shaft	304716	(7/8" Hub) Opt.	
E Winch Handle, 7" w/Nut	5703046	R Winch Reel	304752-PL
F Handle Nut	205015	(1-1/4" Hub) Opt.	
H Reel Shaft	205144	W Rope Clamp Kit Opt.	5243506
J Locknut	205270	AA Strap - 16'	304663
L Ratchet Kit	5704531	BB Strap Bolt 3/8" x 2-3/4"	205309
Q Spacer	206072	CC Locknut 3/8"	205270

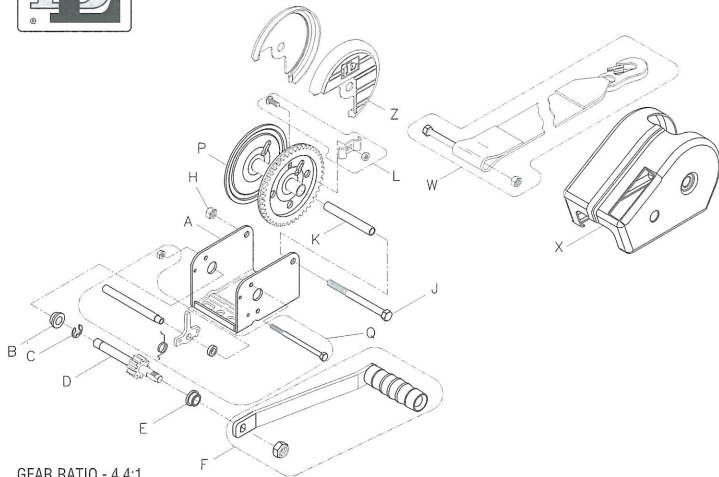
OPERATING INSTRUCTIONS (Models DL1402A & DL1802A Profile)

HANDLE AND NUT MUST BE TIGHTENED AGAINST DRIVE SHAFT BEFORE OPERATING WINCH. Wind line on winch reel by turning winch handle in clockwise direction with ratchet lever in up position. The ratchet should produce a loud, sharp, clicking noise. Make sure that ratchet lever is in up position and holding load before winch handle is released. To unwind or reel out line, securely grip winch handle and apply force in clockwise direction so that ratchet lever can easily be moved to down position. Carefully turn handle in counterclockwise direction. Do not lose control. This winch can be converted to wind line on to the underside of the reel. To do this, carefully examine ratchet assembly and remove it from winch. Do not lose small parts. Turn the lever over and reassemble. Do not over tighten bolt. Check operation to insure the ratchet lever rotates fully without binding.



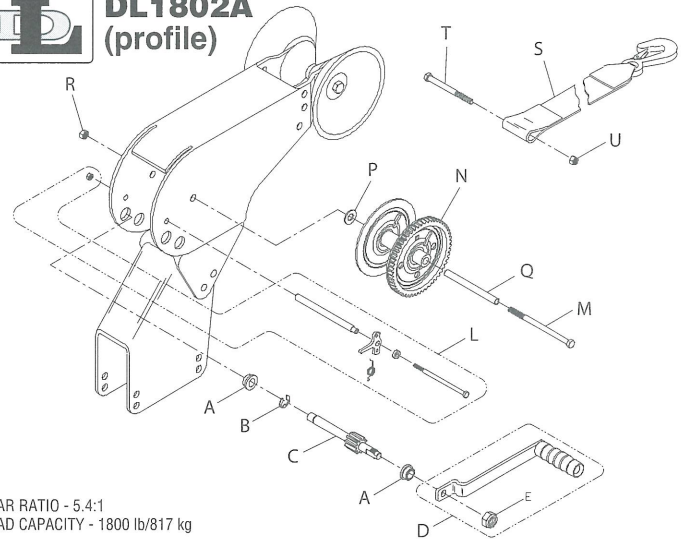
NOT FOR MOVEMENT OF HUMAN BEINGS

DL1402A



GEAR RATIO - 4.4:1
LOAD CAPACITY - 1400 lb/635 kg

DL1802A (profile)



GEAR RATIO - 5.4:1
LOAD CAPACITY - 1800 lb/817 kg

Ref. Description	Part No.	Ref. Description	Part No.
A Winch Base	404870-PL	K Spacer	204807
B Shaft Bushing	204006	L Rope Clamp Kit Opt.	5243506
C E-Ring	205012	P Reel (7/8" Hub)	304723-PL
D Drive Shaft	304722	P Reel (1-7/8" Hub) Opt.	306062-PL
E Shaft Bushing	204007	Q Ratchet Kit	5704556
F Winch Handle - 9-1/2" w/Nut	5703251	X Hand Winch Cover Kit, Opt.	5241203
G Handle Nut	205015	AA Strap - 20'	304538
H Locknut	204803	BB Strap Bolt 3/8" x 3"	203366
J Reel Shaft	203161	CC Locknut 3/8"	204803

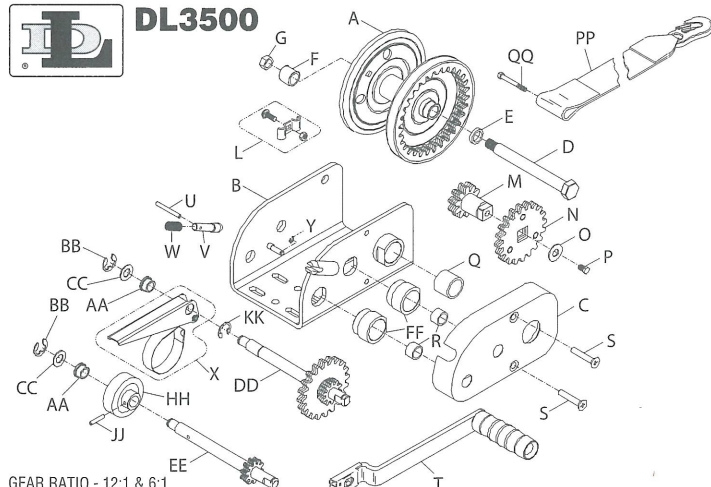
Ref. Description	Part No.	Ref. Description	Part No.
A Shaft Bushing (2)	204009	N Reel	304779-PL
B E-Ring	205116	P Spacer Washer	204360-PL
C Primary Drive Shaft	304731	Q Spacer (Reel)	204808
D Winch Handle 8", w/Nut	5146980	R Locknut	205270
E Handle Nut	204809	S Strap - 20'	304510
L Ratchet Kit	5704754	T Strap Bolt 3/8" x 3"	203366
M Reel Shaft	205126	U Locknut 3/8"	204803

OPERATING INSTRUCTIONS (Model DL3500)

Attach winch handle securely to primary drive shaft (lower or low-speed shaft). Make sure the handle clip engages with groove in drive shaft. Engage ratchet plunger by placing pin in the horizontal position in the deep slot. Wind line on winch reel by turning winch handle in counterclockwise direction. (NOTE: If the winch handle refuses to turn, pull the ratchet plunger pin from slot, turn 180 degrees, and re-engage.) The ratchet plunger should bob up and down as line is wound onto the reel. Make sure that ratchet plunger is fully engaged and holding load before winch handle is released. To unwind or reel out line, securely grip winch handle and apply force in counterclockwise direction so that ratchet plunger can be easily disengaged. Pull ratchet plunger pin up and turn 90 degrees. Apply force to hand brake to help hold load while carefully turning handle in clockwise direction. Do not lose control. After reeling out line, lock load in position by re-engaging ratchet plunger. Check to be certain that it bobs up and down when the handle is turned counterclockwise and that it is securely holding the load before releasing handle.

If handle is attached to intermediate (upper or high-speed shaft), operate winch as described above, reversing clockwise and counterclockwise. This winch is also equipped with a two-way ratchet feature so that it can be used to wind line onto the underside of the reel. Operate as described above, reversing clockwise and counterclockwise.

DL3500



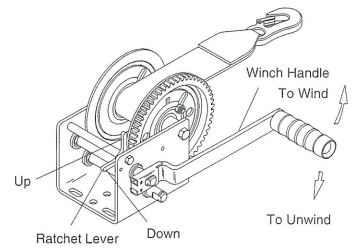
GEAR RATIO - 12:1 & 6:1
LOAD CAPACITY - 3500 lb/1588 kg

NOT FOR MOVEMENT OF HUMAN BEINGS

Ref. Description	Part No.	Ref. Description	Part No.
A Reel Ass'y. - 1-5/16", 3" Wide	304632	U Roll Pin	206549
*A Reel Ass'y.	304156-BK	V Ratchet Plunger	404374
*A Reel Ass'y. - 2-1/2" Hub	304160-BK	W Ratchet Spring	204143
*A Reel Ass'y. - 3-1/8" Hub	304161-BK	X Brake Handle Ass'y.	304208
B Winch Base Ass'y.	304480-PL	Y Retaining Ring (3)	205020
C Gear Cover	404365-PL	AA Oilite Bearing (2)	204148
D Shoulder Bolt	204145	BB Retaining Ring (2)	205012
E Gear Side Spacer	404372	CC Spacer Washer (2)	205120
F Rope Side Spacer	404373	DD Inter. Drive Shaft Ass'y.	304532
G 1/2-20 Locknut	205015	EE Primary Drive Shaft Ass'y.	304531
L Rope Clamp Kit Opt.	304321	FF Drive Shaft Bearing Housing (2)	404476
M Short Drive Shaft Ass'y.	304194	HH Brake Drum Ass'y.	304179
N 20 Tooth Gear Ass'y.	304174	JJ Roll Pin	205117
O Washer	205044	KK Retaining Ring	205116
P 3/8-16 Gear Retaining Screw	205121	PP Strap - 30'	306093
Q 1" Needle Bearing	205133	QQ Strap Bolt 3/8" x 2-1/2"	203920
R 5/8" Needle Bearing (2)	205183	*Optional	
S Cover Screws (2)	205125		
T Winch Handle Ass'y. 8"	5146824		

OPERATING INSTRUCTIONS (Models DL1800A, DL2500A & DL1800A Profile)

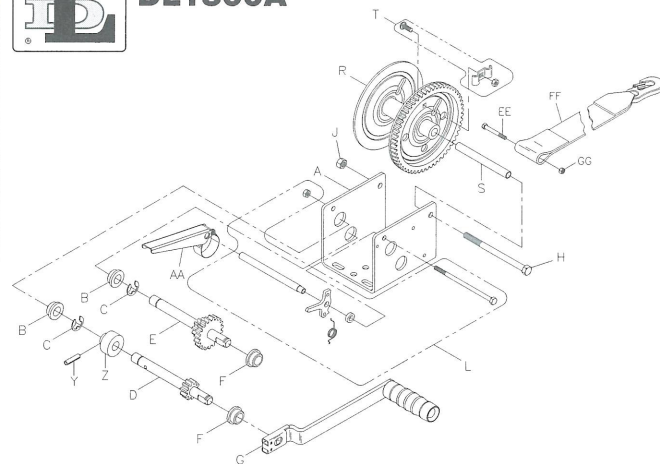
Attach winch handle securely to primary drive shaft (upper or low speed shaft). Make sure that handle clip engages with groove in drive shaft. Wind line on winch reel by turning winch handle in counterclockwise direction with ratchet lever in "down" position. The ratchet should produce a loud, sharp, clicking noise. Make sure that ratchet lever is in "down" position holding load before winch handle is released. To unwind or reel out line, securely grip winch handle and apply force in counterclockwise direction so that ratchet lever can easily be moved to "up" position. Carefully turn handle in clockwise direction. Do not lose control. If handle is attached to intermediate (lower or high speed) shaft, operate as described above, reversing clockwise and counterclockwise. This winch can be converted to wind line on to the underside of the reel. To do this, carefully examine ratchet assembly and remove it from winch. Do not lose small parts. Turn the lever over and reassemble. Do not over tighten bolt. Check operation to insure the ratchet lever rotates fully without binding.



NOT FOR MOVEMENT OF HUMAN BEINGS



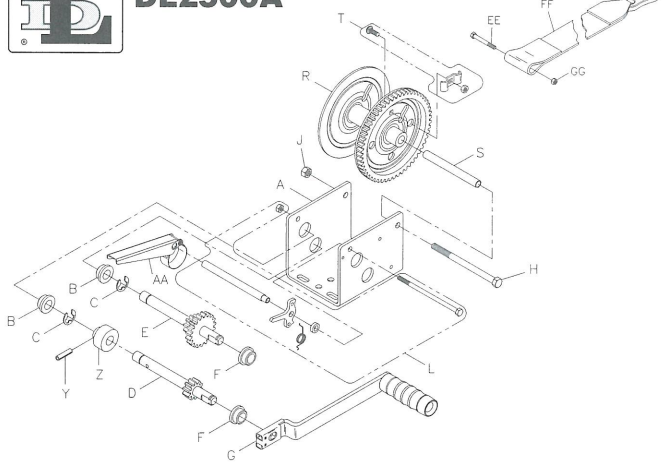
DL1800A



GEAR RATIO - 10.3:1 & 5.4:1
LOAD CAPACITY - 1800 lb/817 kg



DL2500A



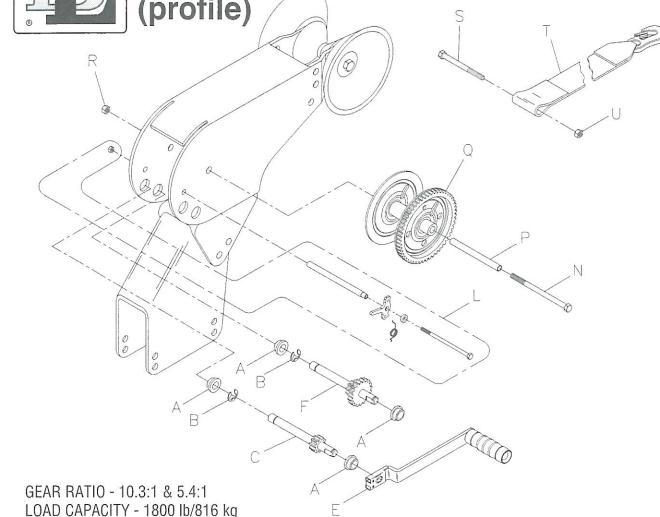
GEAR RATIO - 17.3:1 & 5.4:1
LOAD CAPACITY - 2500 lb/1134 kg

Ref. Description	Part No.	Ref. Description	Part No.
A Winch Base	404879-PL	R Winch Reel	304779-PL
B Shaft Bushing	204009	(2-1/8" wide)	
C E-Ring	205116	R Winch Reel	304730-PL
D Drive Shaft	304726	(1-1/8" hub) Opt.	
D Drive Shaft (w/Hole) Opt.	304780	R Winch Reel	304755-PL
E Intern. Drive Shaft	304732	(2-1/2" hub) Opt.	
F Shaft Bushing	204012	S Spacer (Reel)	204808
G Winch Handle, 8"	5146824	T Rope Clamp Kit Opt.	5243506
G Winch Handle, 9-1/2", Opt.	5703301	Y Roll Pin, Opt.	207255
H Reel Shaft	205126	Z Brake Drum, Opt.	404910
J Locknut	204803	AA Brake Lever Ass'y., Opt.	304810
L Ratchet Kit	5704754	EE Strap Bolt 3/8" x 3"	203366
		FF Strap - 20'	304510
		GG Locknut	205270

Ref. Description	Part No.	Ref. Description	Part No.
A Winch Base	404875-PL	R Winch Reel	304782-PL
B Shaft Bushing	204009	(2-1/8" wide)	
C E-Ring	205116	R Winch Reel	304728-PL
D Drive Shaft	304726	(1-1/8" hub) Opt.	
D Drive Shaft (w/Hole), Opt.	304780	R Winch Reel	304783-PL
E Intern. Drive Shaft	304727	(2-1/2" hub) Opt.	
F Shaft Bushing	204012	S Spacer (Reel)	204808
G Winch Handle, 8"	5146824	T Rope Clamp Kit, Opt.	5243506
G Winch Handle, 9-1/2", Opt.	5703301	Y Roll Pin, Opt.	207255
H Reel Shaft	204804	Z Brake Drum, Opt.	404910
J Locknut	204803	AA Brake Lever Ass'y., Opt.	304810
L Ratchet Kit	5704754	EE Strap Bolt 3/8" x 3"	203366
		FF Strap - 27'	304524
		GG Locknut	204803



DL1800A (profile)



GEAR RATIO - 10.3:1 & 5.4:1
LOAD CAPACITY - 1800 lb/816 kg

Ref. Description	Part No.	Ref. Description	Part No.
A Shaft Bushing (4)	204009	P Spacer (Reel)	204808
B E-Ring (2)	205116	Q Reel	304779-PL
C Primary Drive Shaft	304726	R Locknut	205270
E Winch Handle 8", w/Nut	5146824	T Strap - 20'	304510
F Intern. Drive Shaft	304732	S Strap Bolt 3/8" x 3"	203366
L Ratchet Kit	5704754	U Locknut 3/8"	204803
N Reel Shaft	205126		

CABLE OR ROPE ATTACHMENT METHODS

Select a winch line with breaking strength at least 1-1/2 times the winch rating and a hook 1-1/2 times stronger than the line. If steel cable is selected, the optional reel with large hub may extend cable life. (The above combination meets SAE Standard J1853 for boat trailer winches).

Attach cable or rope by methods described in illustrations (Fig. 1 - Fig. 5). NOTE: Keep a minimum of three (3) full turns of cable or rope on the reel at all times.



Fig. 1 - DL600A

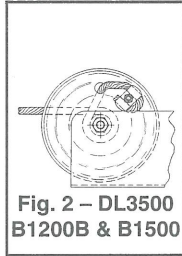


Fig. 2 - DL3500
B1200B & B1500

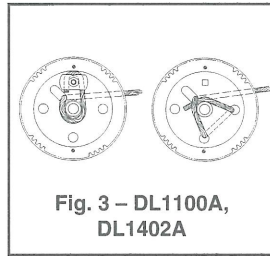


Fig. 3 - DL1100A,
DL1402A

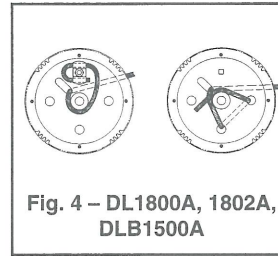


Fig. 4 - DL1800A, 1802A,
DLB1500A

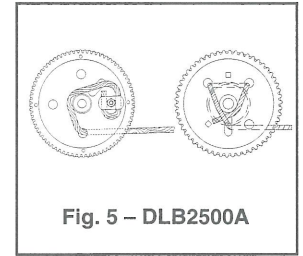


Fig. 5 - DLB2500A

ASSEMBLY INSTRUCTIONS (Model B1200B & B1500)

Thread the handle onto the winch drive shaft and be certain that a clicking noise is produced when the handle is turned clockwise. Install the spring, shaft extension, washer and bolt (Part No.'s 204212, 204213, 205119 and 404122) on the end of the drive shaft as shown. These parts may appear to serve no function, but they provide several important fail-safe features, and should not be altered or removed.

ASSEMBLY INSTRUCTIONS (Model DLB1500A & DLB2500A)

Thread the handle onto the winch drive shaft and be certain that a clicking noise is produced when the handle is turned clockwise. Install the spring and locknut (Items E & G) on the end of the drive shaft as shown. These parts may appear to serve no function, but they provide several important fail-safe features, and should not be altered or removed.

WINCH MAINTENANCE (All models)

These winches have been fully lubricated at the factory; but, for continued smooth performance and increased life, occasional greasing of gears and reel shaft and an occasional drop of oil on drive shaft bearings are recommended.

Keep winch in good working order. Damaged or severely-worn parts create unnecessary dangers and could result in personal injury or property damage. For further maintenance on B1200B and B1500 models, see below.

B1200A & B1500 BRAKEWINCH MAINTENANCE INSTRUCTIONS

In order to insure maximum performance from your Dutton-Lainson winch, a periodic inspection for any necessary preventive maintenance should be made. The following check should be made at least once annually and more frequently when the winch is exposed to an environment which is particularly dirty or wet.

1. Remove all of the load from the winch so that there is slack in the cable. Remove the winch handle and gear cover for inspection of the winch gear train and brake mechanism. This requires removal of bolt #204213 along with the flat washer spacer and spring and requires that the handle be unthreaded (counter clockwise direction) from the drive shaft. The gear cover can then be removed.
2. Examine the winch gear train and brake mechanism for any rust corrosion or build up of debris which might be present. Grasp the ratchet pawl #404409 and lift it out of contact with the ratchet wheel. Remove the ratchet wheel #404408 and two brake plates # 205123 from the drive shaft. **IMPORTANT! Relax the spring tension on the ratchet pawl paying particular attention to the attachment of the pawl to the spring and the amount of tension in the spring.**
3. Check the entire gear train for any abnormal wear and be sure that the entire gear train turns freely. Grease all of the gear teeth with a good wheel bearing grease. Remove and grease reel shaft re-install reel shaft and tighten making sure that reel shaft will not rotate in winch base.
4. Check the ratchet wheel, brake lining plates, winch handle hub and the washer on the primary drive shaft for any build up or glaze (shiny spots) which may be present. This can be removed by rubbing these parts lightly with sandpaper. **CAUTION! Do not grease**

or oil any of the brake mechanism parts. Check the threads on the primary drive shaft and the threads in the handle hub to be sure that both are free of any rust or corrosion. Make sure that the handle runs freely onto the drive shaft thread without any binding whatsoever. Apply a small amount of grease to the threaded area to keep these parts moving freely.

5. Reassemble the two brake pads and the ratchet wheel onto the drive shaft while holding tension in the ratchet pawl. All of these parts should spin freely on the drive shaft. Be sure that the pawl properly engages with the teeth on the ratchet wheel. Thread the winch handle onto the drive shaft and check the operation of the winch. When cranking the handle in the clockwise direction, the ratchet wheel should turn with the shaft causing the pawl to snap in and out of the ratchet wheel teeth. In the counter clockwise direction the ratchet wheel should remain stationary while the handle turns.
6. Completely reassemble the winch gear cover, handle and all remaining parts. Check the mounting of the winch to be sure that it is secure and check the cable for any abnormal stiffness, kinking or broken strands. Replace the winch cable at the first sign of any damage. NOTE: Winch cable will last longer and remain more flexible with occasional application of light oil.

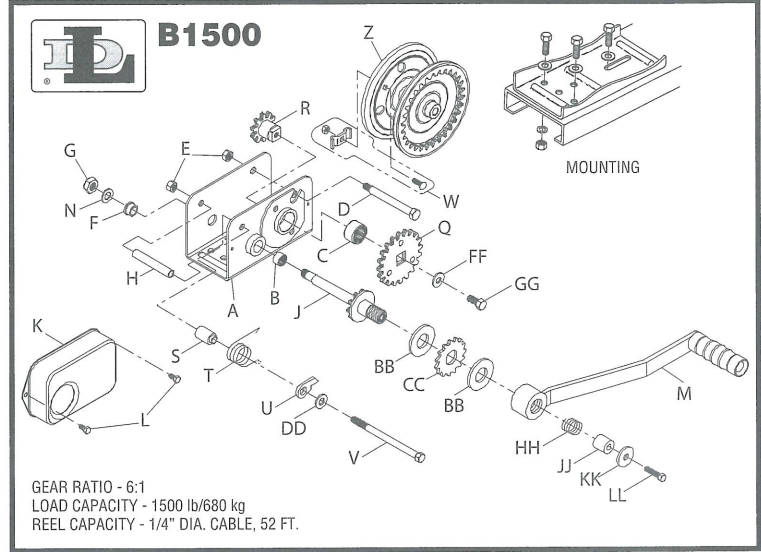
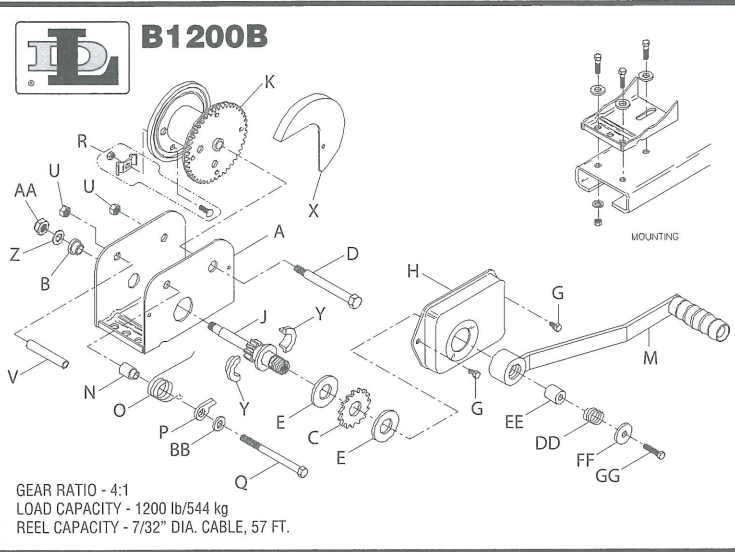
If you have any questions whatsoever concerning the above procedure, please contact the manufacturer.



WARNING! Dutton-Lainson winches are not for the movement of human beings. They should never be used in applications where persons would be positioned on or under the load.

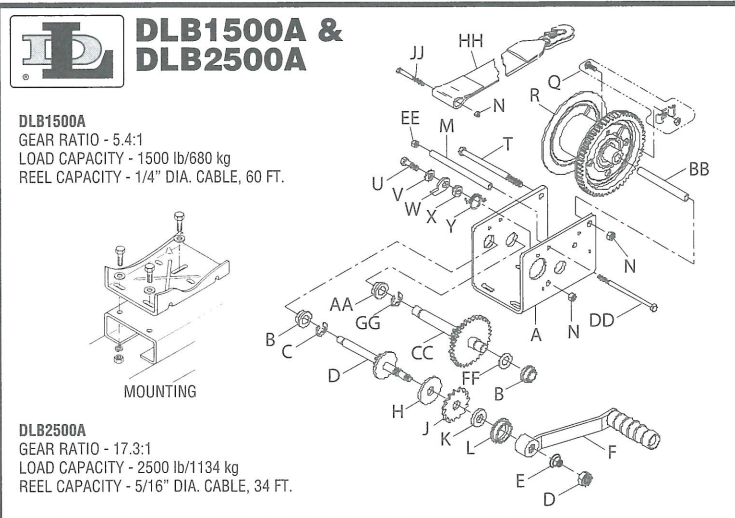
OPERATING INSTRUCTIONS (B1200B, B1500, DLB1500A & DLB2500A)

Wind cable on winch reel by turning winch handle in clockwise direction. This should produce a loud sharp clicking noise. The load will remain in position when the handle is released. Wind cable off the winch reel by turning winch handle counter-clockwise (no noise will be produced). The load will remain in position when the handle is released, but for extra security it is recommended that the handle be turned clockwise until at least two clicks are heard. This will add extra tightness to the brake mechanism. Always satisfy yourself that the winch is holding the load before releasing the winch handle. **IMPORTANT: Sufficient load must be applied to the cable to overcome internal resistance and operate the brake properly; otherwise turning the crank handle counter-clockwise will only remove the handle from the shaft - the reel will not turn.** The minimum operating load requirement is 75 lbs. for B1200B and DLB1500A, 150 lbs. for B1500 and 175 lbs. for DLB2500A.



Ref.	Description	Part No.	Ref.	Description	Part No.
A	Winch Base	404943-PL	O	Brake Ratchet Spring	204142
B	Oilite Bearing	204007	P	Ratchet Pawl	404409
C	Ratchet Wheel	404408	Q	Ratchet Pawl Bolt	205126
D	Reel Bolt	204805	R	Rope Clamp Kit	5243506
E	Brake Lining Pressure Plate (2)	205123	U	3/8" Locknut (2)	204803
G	Self-Tapping Screw (2)	205025	V	Spacer Sleeve	404371
H	Gear Cover	404362-PL	Y	Bearing (2)	404952
J	Drive Shaft Ass'y	304866	Z	Spacer Washer	204360-PL
K	Reel Ass'y - 1-1/8"	304869-BK	AA	Locknut, 1/2	205015
K	Reel Ass'y - 2-1/2" Hub, Opt.	304868-BK	BB	Washer	205055
M	Winch Handle Ass'y, 9-5/8"	5146972	DD	Spring	204212
N	Ratchet Pawl Spacer Bushing	404368	EE	Shaft Extension	404122
			FF	Retainer Washer	205119
			GG	Hex Bolt	204213
			X	Gear Cover, Opt.	404404-PL

Ref.	Description	Part No.	Ref.	Description	Part No.
A	Winch Base Ass'y.	304358-PL	T	Brake Ratchet Spring	204142
B	9/16" Needle Bearing	205131	U	Ratchet Pawl	404409
C	1" Needle Bearing	205130	V	5-1/2" x 3/8" Hex Head Cap Screw	205127
D	Reel Bolt	204805	W	Rope Clamp Kit	5243506
E	3/8" Locknut (2)	204803	Z	Reel Ass'y. - 1/8" Hub	304360-BK
F	Oilite Bearing	204148	Z	Reel Ass'y. - 2-1/2" Hub, Opt.	304359-BK
G	1/2" Locknut	205015	BB	Brake Lining (2)	205123
H	Spacer Sleeve	404371	CC	Ratchet Wheel	404408
J	Primary Drive Shaft Ass'y.	304163	DD	Washer	205055
K	Gear Cover	404363-PL	FF	Washer	205044
L	Self-Tapping Screw (2)	205025	GG	3/8" Retaining Screw	205121
M	Winch Handle Ass'y., 9-5/8"	5146972	HH	Spring	204212
N	Spacer Washer	204360-PL	JJ	Shaft Extension	404122
Q	20 Tooth Gear Ass'y.	304173	KK	Retainer Washer	205119
R	Short Drive Shaft Ass'y.	304169	LL	Hex Bolt	204213
S	Ratchet Pawl Spacer	404369			



Ref.	Description	Part No.	Ref.	Description	Part No.
A	Winch Base - DLB1500A	404891-PL	R	Winch Reel - DLB1500A	304755-PL
A	Winch Base - DLB2500A	406047-PL	R	Winch Reel - DLB2500A	304960
B	Shaft Bushing	204012	T	Reel Bolt - DLB2500A	205335
C	"E" Ring	205116	T	Reel Bolt - DLB1500A	204804
D	Drive Shaft	304760	U	Ratchet Bolt	205167
E	Handle Spring	204364	V	Flat Washer	205055
F	Handle 9-3/8"	5703103	W	Ratchet Pawl	404409
F	Handle 7", Opt.	5703061	X	Ratchet Spacer	404166
G	Handle Nut	205033	Y	Ratchet Spring	204363
H	Pressure Plate	204362	AA	Bushing - DLB2500A	206163
J	Ratchet Wheel	404164	BB	Spacer (Reel)	204808
K	Pressure Washer	404163	CC	Interm. Dr. Shaft - DLB2500A	306035
L	Shaft Bushing	206328	DD	Bolt - DLB2500A	205006
M	Spacer - DLB2500A	404434	EE	Nut - DLB2500A	205014
N	Locknut (3/8"-16)	204803	FF	Flat Washer - DLB2500A	205139
Q	Rope Clamp Kit	5243506	GG	"E" Ring - DLB2500A	206162
			HH	Strap, 102" - DLB2500A	304981
			JJ	Strap Bolt, 3/8"x3"-DLB2500A	203366



A Dependable Company Since 1886
DUTTON-LAINSON COMPANY
Hastings, NE 68902 U.S.A. • Tel 402-462-4141 • Fax 402-460-4612
www.dutton-lainson.com • E-mail: dlsales@dutton-lainson.com

MADE IN U.S.A.