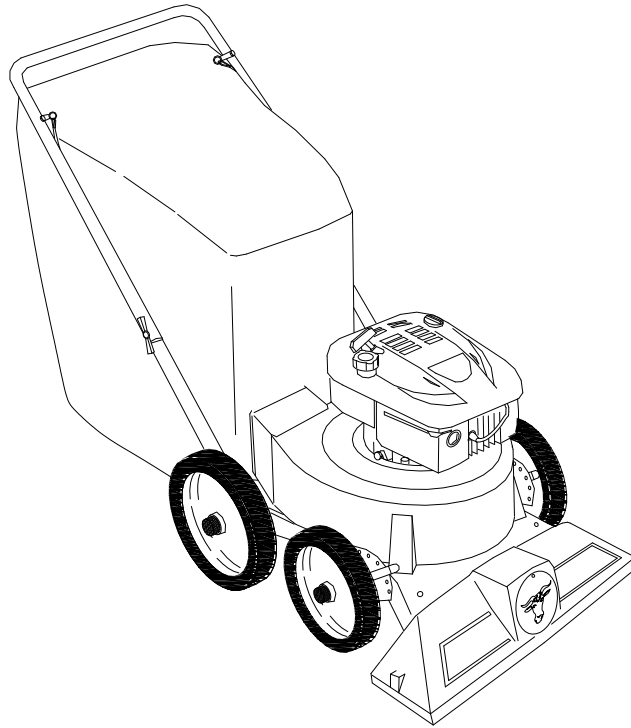


CE

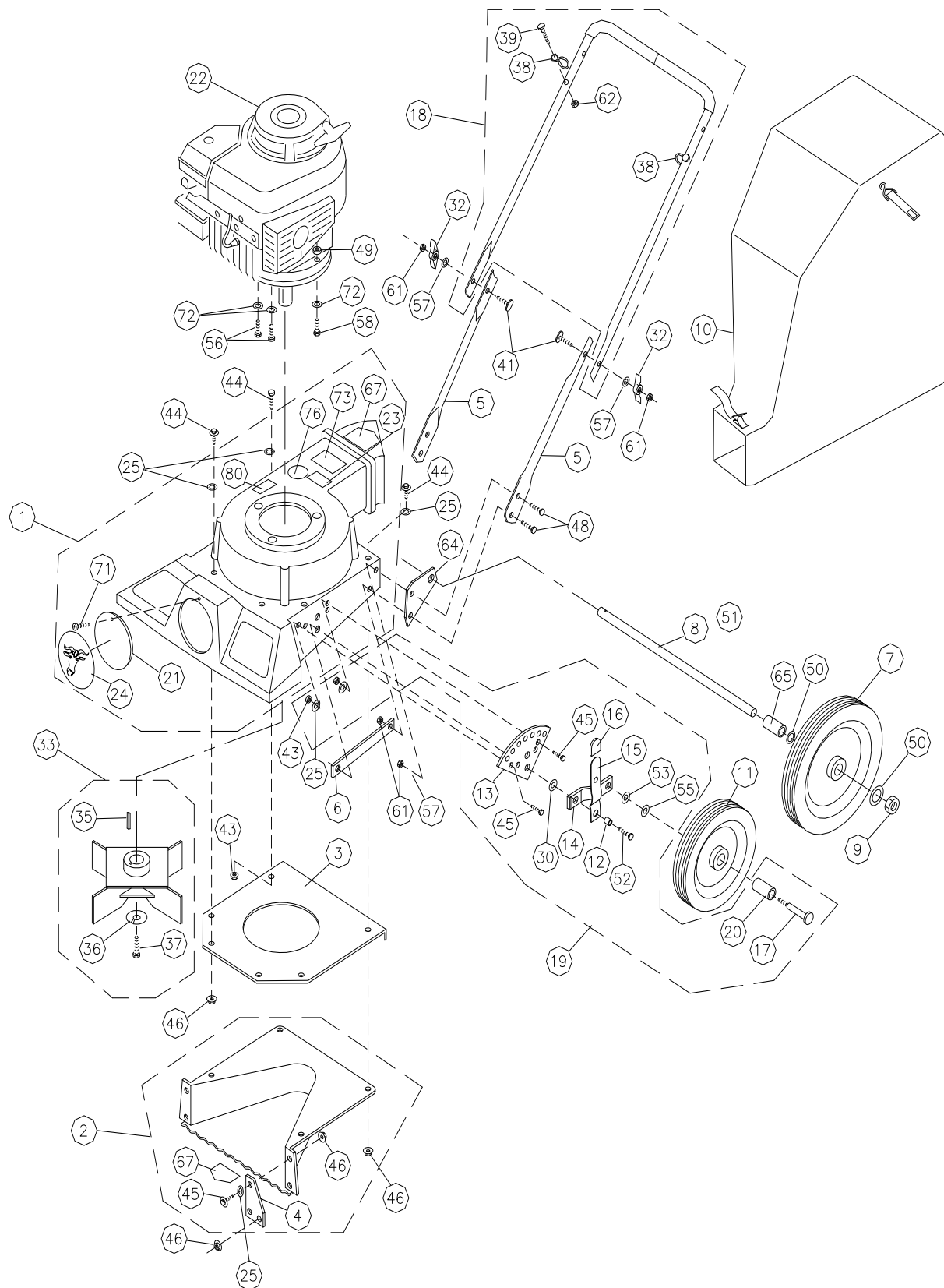


# **BILLY GOAT LB VACUUM**

## **Illustrated Parts List**

**LB351, LB61**

**PARTS DRAWING LB**





## LB Illustrated Parts List

### PARTS LIST

ITEM NO.	DESCRIPTION	LB612 Part No.	QTY	LB351 Part No.	QTY
1	HOUSING ASSY LB GREEN	900590-04-S	1	900590-04-S	1
2	WRAPPER-INTAKE ASSY	900607-04	1	900607-04	1
3	PLATE MIDDLE INLET	900418	1	900418	1
4	PLATE WRAPPER	900413	2	900413	2
5	HANDLE LOWER	900483	2	900483	2
6	PLATE BACKUP	900484	2	900484	2
7	WHEEL REAR 10"	900817	2	900817	2
8	AXLE SHAFT	900818	1	900818	1
9	NUT LOCK 1/2 -13 THIN HT.	8161044	2	8161044	2
10	BAG DEBRIS	900719	1	900719	1
11	WHEEL FRONT 8"	900816	2	900816	2
12	SPACER	900384	2	900384	2
13	PLATE- HT ADJ.	900414	2	900414	2
14	AXLE ARM- HT. ADJ.	900416	2	900416	2
15	ARM ASSY - HT ADJ.	900417	2	900417	2
16	TIP -HT. ADJ.	900459	2	900459	2
17	SCREWCAP 3/8-16 X 2 1/2"	8041056	2	8041056	2
18	HANDLE - UPPER ASSY	900777	1	900777	1
19	HT. ADJ. ASSY	900820	2	900820	2
20	SPACER FRONT WHEEL	900819	2	900819	2
21	PLUG	900146-01	1	900146-01	1
22	ENGINE 6.0 H.P. BRIGGS	890622	1	-	-
	ENGINE BRIGGS 500 SERIES	-	-	901012	1
23	LABEL EAR/EYE BREATHING	890254	1	890254	1
24	LABEL LOGO SMALL FRAME	441152	1	441152	1
25	WASHER 1/4 SAE	8172007	13	8172007	13
26	SCREWCAP 5/16-16 X 1 1/4	8041029	1	8041029	1
30	WASHER 1/2" FLAT KD WHEEL MTG	900230	4	900230	4
32	KNOB-FOLDING HANDLE	900456	2	900456	2
33	IMPELLER ASSY	900421	1	900421	1
35	KEY -3/16 SQ. X 1 1/4"	9201080	1	9201080	1
36	WASHER LOCK 3/8 S/T MED	8177012	1	-	-
	WASHER LOCK 7/16 S/T MED	-	-	8177013	1
37	SCREWCAP 3/8-24 X 1" GR. 8 TORQUE 33-38 FT. LBS (45-52 N.m.)	900154	1	-	-
	SCREWCAP 7/16-20 X 1" HCS GR. 8 W/PATCH	-	-	510213	1
38	BAG LOOP	800178	2	800178	2
39	SCREW CAP 1/4-20 X 1 1/4"	8041007	2	8041007	2
41	BOLT CARRIAGE 5/16-18x2 1/4"	900466	2	900466	2
43	NUT LOCK 1/4 - 20 HEX ZP	8160001	5	8160001	5
44	SCREWCAP 1/4 -20 X 1"	8041006	5	8041006	5
45	SCREWCAP 1/4-20 X 3/4"	8041004	10	8041004	10
46	NUT LOCK WASHER 1/4-20	900453	10	900453	10
48	SCREWCAP 5/16-18 X 1 1/4"	8041029	4	8041029	4
49	NUT LOCK 5/16-18 HEX ZP	8160002	3	8160002	3
50	WASHER FLAT 1/2 SAE (17/32 X 1 1/16 X 3/32)	8172011	4	8172011	4
52	SCREWCAP 3/8-16 X 1 1/2"	8041052	2	8041052	2
53	WASHER LOCK 3/8 INTERNAL	8180011	2	8180011	2
55	WASHER FLAT 3/8 SAE (13/32 X 13/16/ X 1/16)	8172009	2	8172009	2
56	SCREW CAP 5/16-18 X 1 1/4	8041030	2	8041030	2
57	WASHER 5/16 SAE (11/32 X 11/16 X 1/16)	8172008	2	8172008	2
58	SCREWCAP 5/16-18 X 2 1/2	8041034	1	8041034	1
61	NUT LOCK 5/16-18	8160002	5	8160002	5
62	NUT LOCK 1/4-20	8160001	2	8160001	2
64	BRACKET AXLE	900487	2	900487	2
65	SPACER 1/2 X 5/8	900231	2	900231	2
67	LABEL DANGER KEEP HANDS AND FEET AWAY	400424	2	400424	2
71	SCREW SELF-TAPPING 10-24 X 1/2	8123086	1	8123086	1
72	WASHER 5/16 FLAT CUT	8171003	3	8171003	3
73	LABEL FLYING DEBRIS	810736	1	810736	1
76	LABEL READ MANUAL	430363	1	430363	1
80	LABEL MADE IN U.S.A.	520116	1	520116	1